



SERIES MODULES CATALOG

2025 / 2026

www.krugxp.us





**WE MAKE
SURE TO GET
YOU OUT THERE**

SERIES MODULES

As part of our Series Modules range, KRUG EXPEDITION has meticulously designed a variety of living habitats in various sizes and layouts, tailored to fit USA base vehicles.

Our decades of experience and deep understanding of our customers' specific and demanding needs have been key in creating the Series Modules program.

KRUG EXPEDITION is committed to continuous improvement and adding purpose-driven value to everything we do.

As the leading manufacturer, we offer the highest quality at an unbeatable price-performance ratio, making us your ideal partner for building your expedition vehicle.

Customer feedback and our workshop's expertise have always been the foundation to enable us to bring innovative solutions to our Series Modules.



“ WE’RE EXCITED TO HELP YOU
BRING YOUR DREAMS TO LIFE!

180” MODULE LENGTH SERIES

Recommended chassis



153 in

ACELA MONTERRA 4X4



Type A 180” Length



Type C 180” Length

180 inch length series layouts designed for Acela Monterra 4x4.

For years, we have been designing modules based on these layouts for our European customers, and they have proven to be highly practical for a two-person crew.

180" LENGTH TYPE A



2 Crew size

Layout features

- Permanent double bed
- Central dinette transformable into a bed
- Slide-out dining table (optional)
- L-shaped kitchen with a fold-out worktop extension

Main fresh water tanks volume

82 GAL.

- + 49 gal. fresh or black water (optional)
- Grey water tank 66 gal.



3D tour

2 Crew size

Layout features

- Permanent double bed
- Side dinette transformable into a bed
- Kitchen with a fold-out worktop extension
- Panorama side hatch in the dinette (optional)

Main fresh water tanks volume

103 GAL.

- + 49 gal. fresh or black water (optional)
- Grey water tank 66 gal.



3D tour

180" LENGTH TYPE C



205” MODULE LENGTH SERIES

Recommended chassis



153 in

ACELA MONTERRA 4X4



Type A 205” Length



Type B 205” Length



Type C 205” Length

205 inch length series layouts designed for Acela Monterra 4x4.

For years, we have been designing modules based on these layouts for our European customers, and they have proven to be highly practical for a two-person crew.

205" LENGTH TYPE A



2 Crew size

Layout features

- Permanent double bed
- Central dinette transformable into a bed
- Slide-out dining table (optional)

Main fresh water tanks volume

100 GAL.

- + 49 gal. fresh or black water (optional)
- Grey water tank 66 gal.



3D tour

2 Crew size

Layout features

- Permanent double bed
- Front dinette transformable into a bed
- Separate shower and toilet
- L-shaped kitchen with a fold-out worktop extension

Main fresh water tanks volume

100 GAL.

- + 49 gal. fresh or black water (optional)
- Grey water tank 66 gal.



3D tour

205" LENGTH TYPE B



205" LENGTH TYPE C



2 Crew size

Layout features

- Permanent double bed
- Side dinette transformable into a bed
- Kitchen with a fold-out worktop extension
- Panorama side hatch in the dinette (optional)

Main fresh water tanks volume

130 GAL.

- + 49 gal. fresh or black water (optional)
- Grey water tank 66 gal.



3D tour



222” MODULE LENGTH SERIES



ISUZU FTR 4X4
180IN WHEELBASE

180 in

Recommended chassis



Type A 222” Length



TYPE A-1 222” Length



Type B 222” Length



Type C 222” Length

222-inch length series layouts are customized to fit the Isuzu FTR 4x4 conversion with a 180-inch wheelbase.

This combination creates a highly agile and off-road capable expedition truck, featuring a spacious module that offers maximum comfort and energy independence for a crew of up to 3 travelers.

222" LENGTH TYPE A



3-4 Crew size

Layout features

- Permanent double bed
- Central dinette transformable into a bed
- Slide-out dining table (optional)
- 1 permanent bunk bed (2 bunk beds functional)

Main fresh water tanks volume

200 GAL.

- + 49 gal. fresh or black water (optional)
- Grey water tank 66 gal.



2 Crew size

Layout features

- Permanent double bed
- Central dinette transformable into a bed
- Slide-out dining table (optional)
- L-shaped kitchen with a fold-out worktop extension
- Separate shower and toilet

Main fresh water tanks volume

92 GAL.

- + 49 Gal. fresh or black water (optional)
- Grey water tank volume 66 Gal.



222" LENGTH TYPE A-1



222" LENGTH TYPE B



2-4 Crew size

Layout features

- Permanent double bed
- Front dinette transformable into a bed
- Separate shower and toilet
- L-shaped kitchen with a fold-out worktop extension

Main fresh water tanks volume

124 GAL.

- + 49 gal. fresh or black water (optional)
- Grey water tank 66 gal.



2 Crew size

Layout features

- Permanent double bed
- Side dinette transformable into a bed
- Kitchen with a fold-out worktop extension
- Panorama side hatch in the dinette (optional)

Main fresh water tanks volume

130 GAL.

- + 49 gal. fresh or black water (optional)
- Grey water tank 66 gal.



222" LENGTH TYPE C



260” MODULE LENGTH SERIES

Recommended chassis



153 in

ACELA MONTERRA 6x6



Type A Family 260” Length



Type A Long bed 260” Length

We have designed two 260-inch length series layouts specifically for the Acela Monterra 6x6 platform.

Thanks to the 3-axle design, we optimized the 153-inch wheelbase to accommodate the longest possible module, creating the most spacious long-term travel solution for both two travelers and families of up to four.

260" LENGTH TYPE A FAMILY



4 Crew size

Layout features

- Permanent double bed
- Central dinette transformable into a bed
- 2 permanent bunk beds
- Kitchen with foldable worktop extension
- Slide-out dining table (optional)

Main fresh water tanks volume

195 GAL.

- + 49 gal. fresh or black water (optional)
- Grey water tank 66 gal.



2 Crew size

Layout features

- Extra large permanent double bed
- Central dinette transformable into a bed
- Kitchen with foldable worktop extension
- Slide-out dining table (optional)

Main fresh water tanks volume

110 GAL.

- + 49 gal. fresh or black water (optional)
- Grey water tank 66 gal.



260" LENGTH TYPE A LONG BED



External laminate

The custom-designed laminate used for the outer layers of our sandwich panels consists of multiple layers of high-density, crosswoven fiberglass impregnated with epoxy resin. This provides significantly greater strength and impact resistance compared to the standard laminates used by other manufacturers.

Standard laminates are primarily made with polyester resin, which is more brittle and lacks the chemical bonding strength with fiberglass that epoxy resin provides. Our laminate contains 70% fiberglass, whereas traditional GRP laminates typically have 25-30%, and at most 50%, fiberglass content.

Using a higher percentage of fiberglass and epoxy resin results in high tensile strength, high stiffness and outstanding impact resistance.

These properties allow us to use a laminate layer that is only 2mm thick for the exterior shell for our sandwich panels. This keeps the weight of the module at an optimal level while ensuring that the technical properties of our external shell laminate exceed that of traditional laminates that are 3-4 mm thick, fully eliminating the common problem of surface cracks that occurs when traditional GRP sandwich panels are used.

Our external laminate has lower density than Aluminum and three times the tensile strength. This means that our material is lighter and three times stronger than a layer of aluminum of the same thickness. Additionally, aluminum is much more heat conductive and less resistant to atmospheric conditions compared to Krug laminates.



Internal laminate

Since the mechanical stress placed on the interior is significantly lower, we use a GRP laminate with a lower proportion of glass compared to the laminate we use on the outside.

This saves a significant amount of weight and enables the addition of an extra thick gelcoat layer that covers the laminate surface and resulting in a perfectly smooth interior finish.

Polyurethane insulation core

Thanks to the excellent thermal insulation properties of the polyurethane foam, our 60 mm panels offer the same level of insulation as a 300 mm thick wooden wall.



Heating system

Diesel-Powered liquid heater

We install the Scheer Nano diesel-powered hot liquid heater in our cabins as standard. This system ensures low-noise operation and stepless power regulation, maintaining a constant interior temperature for maximum comfort.

Why Diesel Heating?

Heating with diesel provides maximum independence. Fuel is drawn directly from the vehicle's main tank, eliminating the need for separate gas purchases and ensuring availability worldwide. A diesel heater offers significant advantages over gas heating, particularly in winter and international travel.

Gas heating accounts for over 80% of total gas consumption in winter, often requiring additional gas bottles and adapters that can be difficult and expensive to source abroad.

With diesel heating, you can heat while driving, free up storage space, and eliminate the need for a separate gas bottle for heating.

Efficient Liquid-Based Heating System

The Scheer Nano liquid heater powers an underfloor heating system and multiple radiators, ensuring even heat distribution throughout the living cabin while retaining heat effectively.

Key Features of the Scheer Nano Liquid Heater:

- 7 kW heating output
- Hybrid function – Diesel/electric operation with up to 3 kW output
- Automatic altitude adjustment for optimal use at various elevations
- Blue burner technology – High efficiency and environmentally friendly
- Pressure-resistant stainless steel boiler
- Preheating capability – Utilizes engine heat and preheats the drive section
- Optional app-based individual room temperature control

Heating System Components:

- Underfloor heating in the living area
- Radiator in the dinette
- Radiator in the bedroom
- Towel radiator in the bathroom
- Radiator in the garage



TECHNOLOGY AND FEATURES

Every one of our Modules is manufactured in-house which enables us to ensure quality control at every stage of production – from raw materials to the finished product.

MODULE BODY

We build our modules using reinforced sandwich panels that offer exceptional insulation and performance. These modules are entirely free of cold bridges, which not only prevent condensation inside but also reduce energy consumption in both extreme cold and hot conditions.

Every composite panel is designed using CAD so that all necessary parts and reinforcement elements are considered and planned before the composite panels are produced by Krug XP specialists.

We use a rigid polyurethane foam as the core insulation material for our panels. The insulation core is covered with layers of fiberglass laminate.

This combination of materials is vacuum cured to create panels 60 mm thick, which are then used as the primary structural element for our modules. The floor panel is 80mm thick, as in addition it includes a layer of special composite material and a steel frame to support the weight of the module.

All other custom structural parts, like corner caps and uniquely angled profiles, which are not readily available in GRP, are also manufactured by our team using fiberglass molding technology. This way we ensure all bonded elements are made of the same material and have consistent thermal expansion properties.

SUBFRAME

The subframe decouples the module body from the vehicle chassis ensuring that the module is not damaged when offroad driving results in twisting loads being placed on the chassis frame.

We build our intermediate frames using a multiple-point mounting with elastomer or spring buffers, taking chassis manufacturer construction guidelines into account and using a technical concept developed by one of the most recognized companies in the field of special vehicle construction. This mounting solution has proven to be reliable and stable off-road, as well as exceptionally stable on the highway.

Our subframe is made from a special high- strength steel, it is fully galvanized both inside and out, and then externally painted.

WINDOWS

Our windows are made using real tempered glass and been tested to withstand the harshest road and climatic conditions. Can be safely exposed to low pressure at high altitudes.

VENTILATION

Powerful roof fans operate in both air inlet and outlet modes to provide optimal air circulation inside the module. Ventilation unit with heat recovery reduces humidity and saves energy.

DRIVER CAB CRAWL-THROUGH

The living module can be permanently connected to the driver cab with a flexible bellow. It is easily disconnected from the cab by means of quick- release latches that allow for easy driver cab tilting to access the engine for service.

SECURITY

All doors and hatches are equipped with reliable 3-point locks



WATER SUPPLY SYSTEM

The fresh water tank is filled via the filler neck in the side wall of the module, enabling to fill the tank when the water pressure is insufficient or there is a need to fill from the canister.

The system for pressurized filling, includes water pre-filtration and a powerful UV treatment unit. The fresh water is pre-filtered via a filtration system with 3 pre-filtering stages with activated carbon and a fine filter capacity of up to one micron. The water is then treated with PURION 1000 UV lamp. The UV lamp emits a wavelength of 254 nm without producing any ozone. This wavelength ensures that germs, bacteria, viruses and spores are eliminated. The PURION 1000 enables you to disinfect drinking water at a flow rate of up to 1,000 l/h (265 gal./h).

The water supply is realized by means of two pressure pumps, which can be switched independently of each other. This makes our water supply system fail-safe and redundant.

Fresh water going to the drinking water tap in the kitchen is additionally filtrated with General Ecology Seagull IV-X2 system with carbon activated pre-filter that ensures the effective removal of chemical and visible contaminants, including herbicides, pesticides, chlorine and other particles exceeding 0.4 micron (4 nanometres). Furthermore, the filter removes bad taste, odours and turbidity.

The next layer of drinking water treatment is UV LED unit. Its purpose is to eliminate any residual bacteria or viruses that were not filtered out in the previous stages. UV LED disinfection unit is fully automatic. It has no warm-up phase, unlike traditional UV lamps, and turns on instantly when the water is being drawn.



ENERGY SUPPLY SYSTEM

Our modules and their equipment are designed to provide a complete all-electric experience.

Powerful solar panels, a generously sized battery bank and matching components by Victron (an established manufacturer of energy systems for marine and off-grid applications) ensure a reliable supply of energy wherever you may be, so that you don't have to worry about procuring gas bottles and / or adapters.

Our standardized energy supply system is very compact and includes a battery bank with a capacity of 990 Ah at 25.2 volts (24 kW / hours). To achieve these amazing values, we rely on the latest lithium-ion technology which is characterized by a very high energy density (high energy content with low weight and volume). The batteries we use, have an integrated energy management system and meet all necessary safety standards and requirements.

Two powerful inverter-chargers with an output of 5000 VA supply our modules with 230V and 120V alternating current and allow to charge the batteries from both 120V and 230V grid, which makes it possible to charge anywhere in the world.

Several energy sources are available for charging the batteries. In addition to traditional solar and shore power charging, we also connect the truck's alternator to the module batteries via a charge controller to continually charge the house batteries when the engine is running.

Our energy supply system features an emergency start function for starting the engine with the help of module batteries, in case the vehicle starter batteries become discharged.

EQUIPMENT & OPTIONS

MODULE BODY

- Interior walls and doors in accordance with the layout
- Complete interior and exterior painting in the colour of your choice
- Entrance door made of GRP material in accordance with the wall thickness, including door fixtures, a three-point locking system and a rain gutter above the door
- Fold-out windows made of triplex safety glass with double insulation and sun protection coat-ing, size and quantity according to the layout
- Laterally sliding insect screen on the entrance door
- Insect and sun protection / black out roller blinds on the windows
- Two access flaps to the storage space in the garage compartment, locks, rain gutter above the flaps
- Roof hatch made of insulated sandwich panels, including insect screen and warning buzzer
- Airline and keder type fixation profiles on the right side wall of the module for the awning installation
- Galvanized steel subframe

OPTIONAL

- Driver cab crawl-through
Three-point locking system, EPDM connection bellow with quick-release fasteners.
- Double glass insert in the roof hatch above main bed

MODERN INTERIOR

The interior of the living module is modern and appealing.

The design emphasizes function and tailored to the needs of long-distance travelers.

There is a wide range of materials to choose from, allowing you to customise your module according to your taste

- Furniture made from high quality panels
- Safety locks on the furniture doors and drawers
- Visible surfaces covered with decorative HPL
- Dinette with high-quality fabric upholstery
- Robust design vinyl flooring

OPTIONAL

- Leather upholstery of the dinette cushions
- Wood veneer furniture surface





DINING AREA

The size of the dining area seating benches and table is determined by the living module layout.

The table top surface is given the same finish as the other furniture surfaces. The seating bench upholstery is fabric as standard, or can be upgraded to leather, with both options available in any colour of your choice.

The water tanks and the modular Powerbox (that provides the energy supply for the module) are located underneath the seats.

The platform underneath the table contains water supply and heating equipment. In keeping with our philosophy of maximum reliability at the lowest possible price, these parts and systems are all standardised.

The table in the dining area can easily be converted into an additional bed.

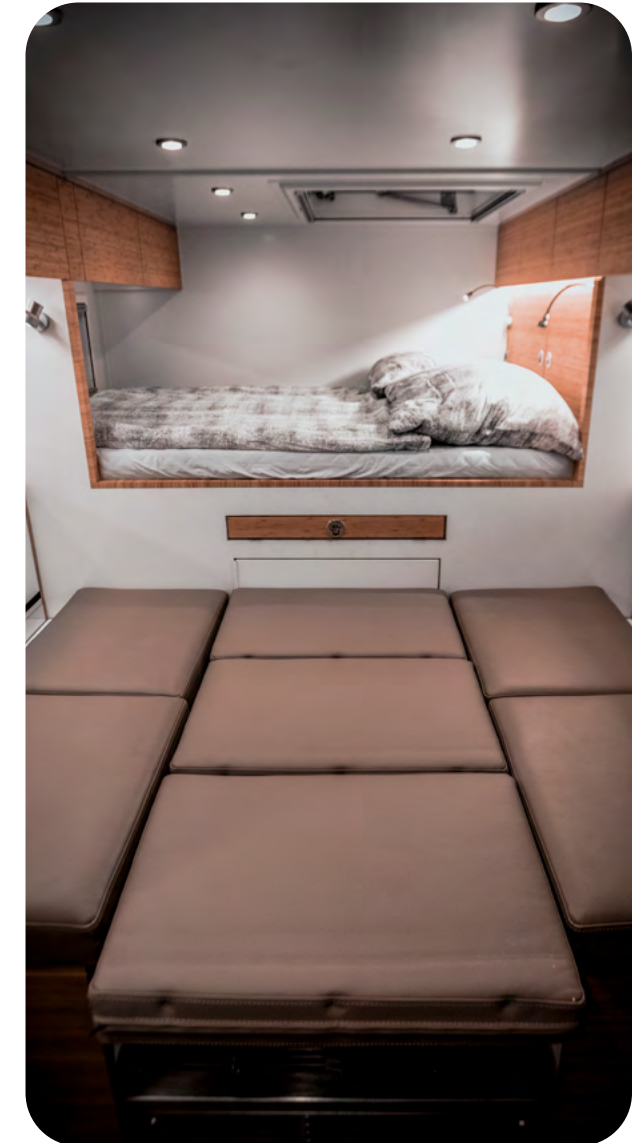
OPTIONAL

Innovative, self-supporting, sliding table system

Our innovative sliding dining table system can be completely retracted under the double bed, thus ensuring optimal space and convenience.

- Single-handed operation
- Multiple positions possible
- Stable heavy duty guide rails
- 4x folding flaps that can serve as a footrest or expanded into a double bed

Only available as part of type A / A-1 layouts



KITCHEN

- HPL Worktop
- Induction hob by Miele with two cooking zones (flush-mounted)
- Miele oven with microwave
- Stainless steel sink by Blanco
- Fridge-freezer combination Miele KF 7731 D

56 GAL.

Refrigerator compartment

14 GAL.

Freezer compartment

OPTIONAL

- Complete set of cutlery, tableware and cookware for 6 people
- Miele steam oven with microwave feature

Total 60 GAL. Including a small Victron inverter



BATHROOM

- Waterless Separett Tiny dry separation toilet with urine tank
- Shower with shower set and concealed underfloor shower tray
- Robust HPL flooring
- Towel dryer
- Built-in GRP sink with single-handle faucet
- Soap dispenser
- Exhaust fan
- Cabinet for bathroom accessories
- Mirror

OPTIONAL

- Macerating toilet and 49 gal. black water tank

Yacht-quality macerating toilet by Tecma. Black water tank with external ventilation via an activated carbon filter and an irrigation pump that transfers the water from the grey water tank into the black water tank for flushing purposes.



HEATING

Scheer Nano liquid heating system:

- Hybrid function (diesel / electric with up to 3 kW)
- Preheating of the drive section and use of the engine heat
- Proven for mobile use
- 7 kW output
- Pressure-resistant stainless steel boiler



VENTILATION AND AIR CONDITIONING

Dometic RTX 2000 air conditioning system

This extraordinarily compact roof-mounted air conditioner is designed to offer the highest possible efficiency and lowest possible energy consumption. Easy to operate, with flexible air flow thanks to independently rotating diffusers which can be adjusted effortlessly, either via the integrated control panel or remote control.



WATER SUPPLY

- 2x water pumps **REDUNDANCY**
- Grey water processor
- Advanced PEX piping system

OPTIONAL

- Tiny Wash washing machine

Resistant to vibrations, this washing machine is mounted inside the garage compartment and connected to the energy and water supply system as well as to the grey water tank.

- Submersible fresh water pump



POWER SUPPLY

Standardised energy supply Powerbox

- High Energy lithium-ion battery bank
- Very high energy density (very high energy content with low weight)
- Integrated battery management system
- Very high safety standard
- 24V, 990 Ah total capacity (24kW / hours)

Victron Quattro 5000 120V Inverter and charger

- Inverter power: 5000 VA (4000 W cont. output, 10000 W peak power)
- Charging capacity: 120 A24V

Victron Quattro 5000 230V Inverter and charger

- Inverter power: 5000 VA (4000 W cont. output, 10000 W peak power)
- Charging capacity: 120 A

Solar Power

- Min. 900 Wp solar panels, depending on module type and use of roof area
- DC / DC charge controller (24 V / 50 A) for charging the module batteries from the vehicle's alternator

Control components for power supply

- Victron colour control monitor and wireless remote system monitoring
- Fuse panel with automatic circuit breakers and residual current operated circuit breakers
- Emergency start feature for starting the vehicle using the module batteries
- Worldwide monitoring of the system via the VictronConnect app

Interior lighting and sockets

- Dimmable, recessed ceiling-mounted LED luminaires, controllable via app and incremental-ly adjustable
- Dimmable, separately adjustable LED light strips underneath the wall units
- Dimmable reading lights in the bedroom and dining area
- Multiple 120 V sockets
- Multiple USB-C charging ports
- 12V socket

Outdoor lighting and sockets

- 120 V socket on the left and right side of the garage compartment
- Shore power connection, 32 A, high-quality charging cable
- Exterior LED lights on all 3 sides of the living module (left, right and rear)
- Marker lights

OPTIONAL



- Camos 360° Camera System
Includes four ultra-wide-angle HD cameras and a control unit and a 7-inch display in the cab
Switches on automatically when the vehicle is put into reverse
Prevents blind spots, improves safety
Comprehensive view of the entire environment in a single image
Prevents collisions with people and objects
- Vertical TV lift system (floor plans A, A-1, B, B-1 only)
- Preparation for Starlink



ACCESSORIES AND ADD-ONS

ROOF RACK

For popular truck chassis, such as Isuzu FTR or Acela Monterra, we offer our trusted and time-proven standard cab roof racks.

All of them are equipped with foldable and lockable access ladder and headlights of your choice. We can also supply sets of cargo boxes for all types of roof racks.



ENTRANCE STAIRS

We offer a broad range of stairs: from a simple folding ladder to much more sophisticated solutions.

Our most technologically advanced solution is a motorized boxed retractable ladder mounted right under the entrance door.

Since they never touch the ground, our access stairs are exceptionally steady. A sophisticated supporting design, despite its compactness, ensures the superior stability of our stairs. Our five-step, stairs are arguably the best and most comfortable solution for off-road trucks on the market.



SPARE TIRE, MOTORCYCLE, AND QUAD CARRIERS

We offer external mounting solutions for spare tires, motorbikes, and e-bikes ranging from lightweight modular racks with manual or electric winches to the heavy duty hydraulic lift solutions.

All Krug Expedition vehicles come standard with robust mounting plates welded to the ends of the subframe. These mounts can be used for transporting heavy items. The idea behind this solution is to load all the weight and acceleration forces to a rigid subframe instead of the body of the living module.



OUTDOOR KITCHEN

Off-road vehicles are primarily used for taking trips through nature. Krug will help you achieve the maximum level of comfort and independence.

You don't have to be limited to cooking inside only. We can outfit your truck with a complete, quickly transformable outdoor kitchen that fits inside one of the external cargo boxes.

The variety of cooking appliances are as flexible as our internal solutions: electric grill, electric induction cooker, or contact grill—you name it. A small sink comes as a standard—all water connections are available and ready for this outfit.



KRUG EXPEDITION NA LLC

info@krugxp.us

WWW.KRUGXP.US





WELCOME TO THE TRIBE

@KRUGXP
#KRUGEXPEDITION



Instagram



YouTube



Facebook

© PHOTOS BY MARKUS FISCHER, HARALD STEINER